

The Symbol of Excellence



Industries Inc.

Hydraulic Dumpers



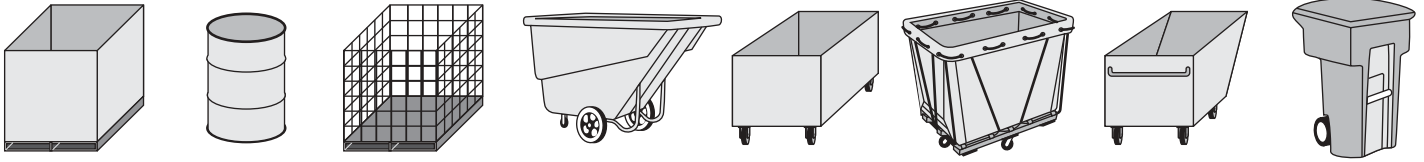
Mobile Parts Dumpers are used in a number of locations at this automobile component assembly facility to help the employees sort and organize parts during the manufacturing process.



Printed on Recycled Paper

We Build Equipment the Old Fashioned Way — "With Pride"

Container Attachments



Side Fork Pockets



Bottom Fork Pocket



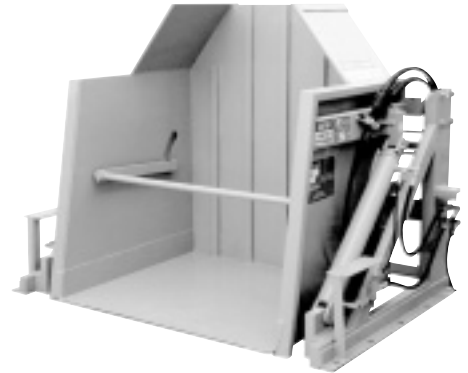
Side/Top Angle Hold Down



Wheel Capture Side Angles



Adjustable Hold-down Bar



Hydraulic Hold-down Bar

- Cart Attachment or Scoop Custom Designed and Built to Match Your Specific Cart or Container
- Custom Design Assures a Safe and Secure Fit for the Cart/Container During Tipping Operation
- Container Hold-down Systems to Capture Fork Pockets, Wheels, Side Pockets, or the Top of the Container
- Cart/Container Evaluated for a Hold-down System that Maintains a Secure Fit while Allowing for a Free Flow of Material During the Dumping Process
- Manually and Hydraulically Operated Adjustable Bar Hold-down Systems Available for Dumpers Required to Handle Multiple Cart Sizes
- Engineered Systems for Custom Dumpers or Special Attachments Including:
 - Extending Dumper Reach
 - Re-direct the Flow of Material
 - Regulate the Rate of Discharge
 - Capture an Unusual Style of Container



◀ This dumper is equipped with a hydraulic controlled lid that helps the operator regulate the flow of material into a processing system.

Up To 135° Heavy Capacity Production Dumpers

Standard Model	Rolo-1000	Rolo-2000	Rolo-4000	Rolo-6000	Rolo-8000
Lift Capacity (Lbs.)	1,000	2,000	4,000	6,000	8,000
Dump Height *	<0" to 60"	<0" to 84"	<0 to 84"	<0" to 84"	<0" to 84"
Cylinder(s) (Number)	2	2	2	2	2
Power Unit Range	1 HP/1.15 GPM to 5 HP/6 GPM	2 HP/1.85 GPM to 10 HP/10 GPM	2 HP/1.85 GPM to 10 HP/10 GPM	3 HP/3 GPM to 10 HP/10 GPM	3 HP/3 GPM to 10 HP/10 GPM
Cycle Time Range (Sec.)**	26 to 140	20 to 160	34 to 220	34 to 137	41 to 137

Notes: * The Rolo style dumpers can be designed with a Dump Height below grade.

** Cycle Times are shown in a range due to variances in cylinder lengths and size as determined by dumping heights, and hydraulic oil flow as determined by the power unit.

Design

Cart Attachment: Scoop designed to fit existing or required carts. Can be equipped with a hold down bar, side hold down angles, bottom or side forks, or an adjustable hold down bar (See the Container Attachment Page for Additional Hold-down Options.)

Customized for carts, containers, gaylords, boxes, baskets, totes, barrels, drums or special containers
Dual cylinder power for stability and a greater lifting capacity

Structural steel frame for stability and durability
High tensile steel pivot shaft
Heavy duty bearings

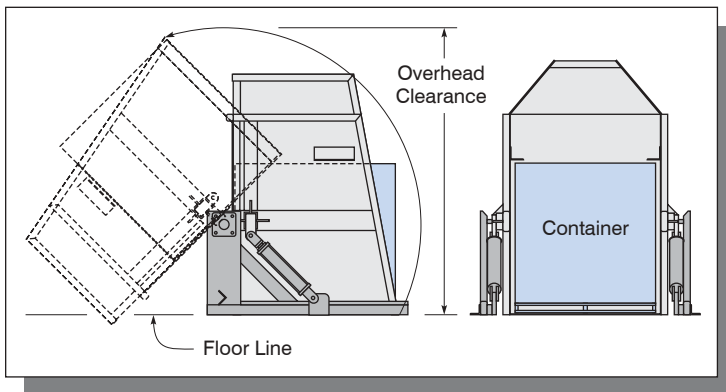
Uses

Empty material from a container into production, recycling or waste handling equipment:

- On to a conveyor
- Into smaller containers
- On to a sorting tray or table
- Directly into production or processing equipment

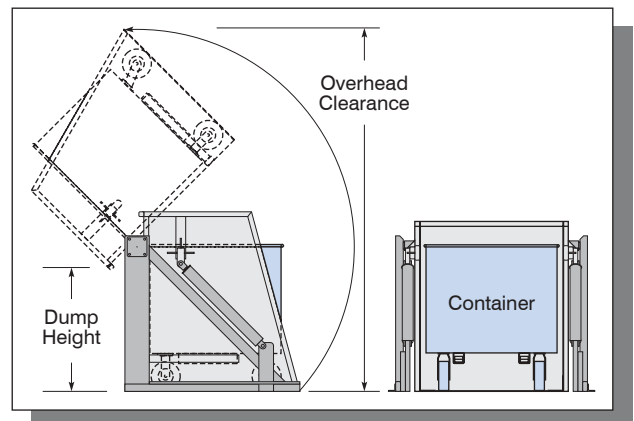
Used extensively in:

- Automotive parts production
- Forging facilities
- Recycling operations
- Distribution centers
- Food processing
- Waste handling



Containers can be placed directly into the cart attachment scoop and held in place by side hold-down bars. (See the Container Attachment Page for Additional Hold-down Options.)

This illustration shows an optional funneled attachment that will direct the material from the container into a hopper that is narrower than the container and below the floor level.



Carts equipped with casters can be rolled into the cart attachment scoop and held in place by bottom forks, if the cart is equipped with fork pockets. (See the Container Attachment Page for Additional Hold-down Options.)

This illustration shows a cart that is being emptied above floor level. Rolo dumpers can be designed with a dump height up to 84". Additional overhead clearance is necessary as the required dump height increases.

135° Light Capacity Dumpers

Standard Model	LD-500	LD-1000
Lift Capacity (Lbs.)	500	1,000
Dump Height	48" to 60"	48" to 60"
Cylinder(s) (Number)	1	1
Power Unit Range	1 HP/1.15 GPM to 3 HP/3 GPM	1HP/1.15 GPM to 3 HP/3 GPM
Cycle Time Range (Sec.)*	32 to 84	20 to 160

Notes: * Cycle Times are shown in a range due to variances in hydraulic oil flow as determined by the power unit.

Design

Cart Attachment: Designed to fit existing or required carts. Can be equipped with a hold down bar, side hold down angles, bottom or side forks, an adjustable hold down bar, or a 90 gallon container catch.
(See the Container Attachment Page for Additional Hold-down Options.)

Customized for carts, containers, gaylords, boxes, baskets, totes, barrels, drums or special containers
Single cylinder light duty lifting capacity
Structural steel frame for stability and durability
Heavy duty bearings

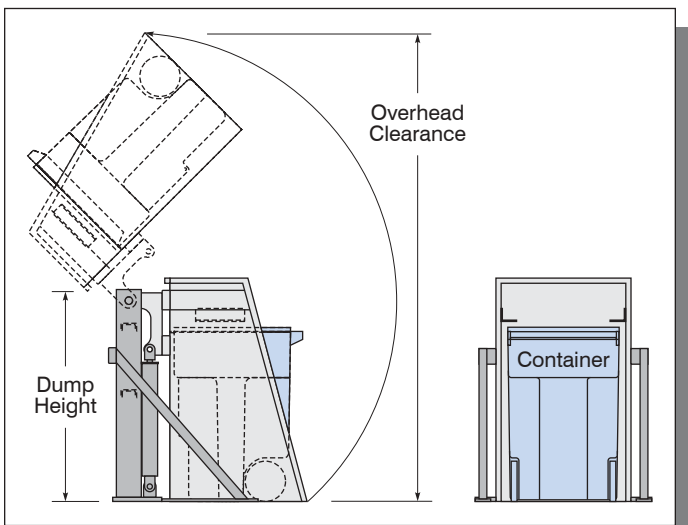
Uses

Empty material from a container into production, recycling or waste handling equipment:

- On to a conveyor
- Into smaller containers
- On to a sorting tray or table
- Directly into production or processing equipment

Used extensively in:

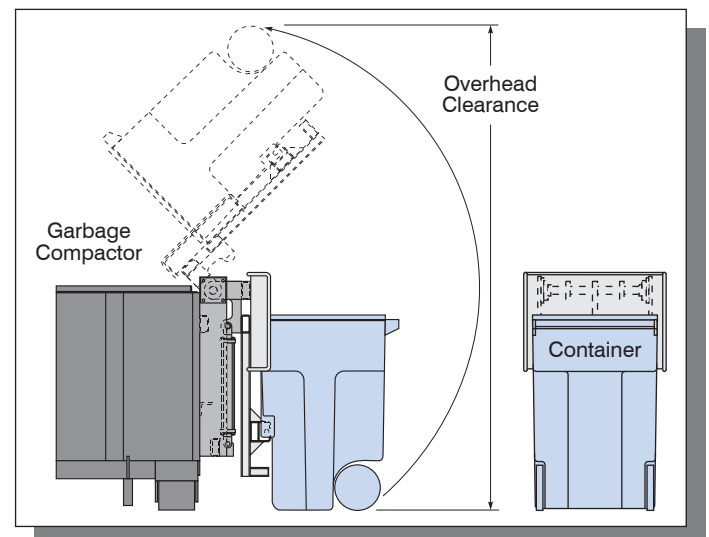
- Waste handling
- Food processing



The LD model dumper can be attached directly to the side of a garbage compactor or other material processing equipment to empty small containers, like the 90 gallon model shown, directly into the machine's hopper. The cart is held in place by side hold-down bars or a mechanism that catches the retaining bar on ANSI compliant containers. (See the Container Attachment Page for Additional Hold-down Options.)

Small containers, like the 90 gallon model shown, can be placed directly into the cart attachment and held in place by side hold-down bars or a mechanism that catches the retaining bar on ANSI compliant containers. (See the Container Attachment Page for Additional Hold-down Options.)

This illustration shows a remote mounted dumper with a scoop attachment that will direct the material from the container into an existing hopper.



150° Heavy Capacity Production Dumpers

Standard Model*	DD-2000	DD-4000
Lift Capacity (Lbs.)	2,000	4,000
Dump Height	48" to 60"	48" to 60"
Cylinder(s) (Number)	1	2
Power Unit Range	1 HP/1.15 GPM to 3 HP/3 GPM	1HP/1.15 GPM to 5 HP/6 GPM
Cycle Time Range (Sec.)**	32 to 84	32 to 170

Notes: * Maximum cart size for the DD-2000 is 60" long and/or 42" wide.

** Cycle Times are shown in a range due to variances in hydraulic oil flow as determined by the power unit.

Design

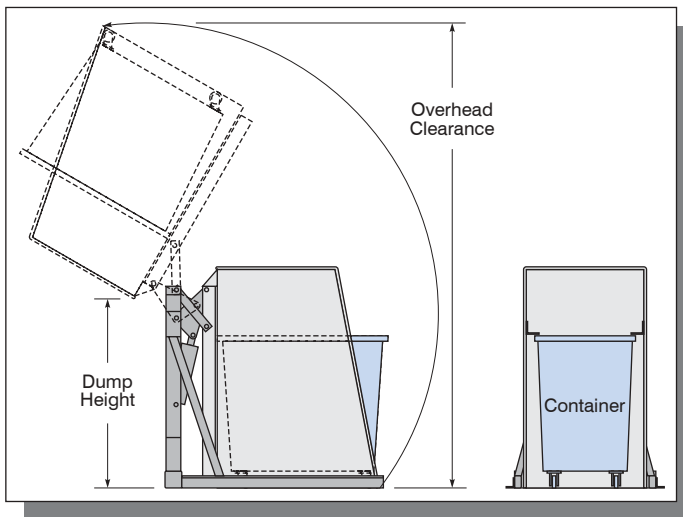
Cart Attachment: Scoop or cart attachment designed to fit existing or required carts. Can be equipped with a hold down bar, side hold down angles, bottom or side forks, or an adjustable hold down bar (See the Container Attachment Page for Additional Hold-down Options.)

Customized for carts, containers, gaylords, boxes, baskets, totes, barrels, drums or special containers
 Single or dual cylinder medium duty lifting capacity
 Structural steel frame for stability and durability
 Heavy duty bearings

Uses

Empty material from a container into production, recycling or waste handling equipment:
 On to a conveyor
 Into smaller containers
 On to a sorting tray or table
 Directly into production or processing equipment

Used extensively in:
 Waste handling
 Recycling
 Industrial processing
 Food processing



← Carts can be rolled or containers can be placed directly into the cart attachment or scoop. (See the Container Attachment Page for Hold-down Options.)

This illustration shows a remote mounted dumper with a wheeled cart held in place with side hold-down angles.

DD-2000 attached to the deck of a stationary → garbage compactor emptying trainable, wheeled carts into the compaction chamber of the compactor. The carts are held in place with a bottom fork pocket attachment.



135° Extended Height Light Capacity Dumpers

Standard Model *	EHD-1003-LD	EHD-1005-LD
Lift Capacity (Lbs.)	300	500
Dump Height	7' to 14'	7' to 14'
Cylinder(s) (Number)	1	1
Power Unit Range	1 HP/1.15 GPM to 2 HP/1.85 GPM	1HP/1.15 GPM to 2 HP/1.85 GPM
Cycle Time Range (Sec.)**	33 to 53	33 to 53

Notes: * The model number will change to indicate the dump height (first two numbers e.g. 09 for 9') and the lifting capacity (second two numbers e.g. 03 for 300 lbs.).

** Cycle Times are shown in a range due to variances in hydraulic oil flow as determined by the power unit and the length of the lifting cylinder.

Design

Cart Attachment: Scoop designed to fit existing or required carts. Can be equipped with a hold down bar or side hold down angles (See the Container Attachment Page for Additional Hold-down Options.)

Customized for carts, containers, boxes, baskets, totes, small barrels or drums or special containers

Single cylinder light duty lifting capacity

Structural steel frame for stability and durability must be attached to a permanent structure

Heavy duty bearings and chain

Uses

Empty material from a container into production, recycling or waste handling equipment:

On to a conveyor

Into a container or trailer

Directly into production or processing equipment

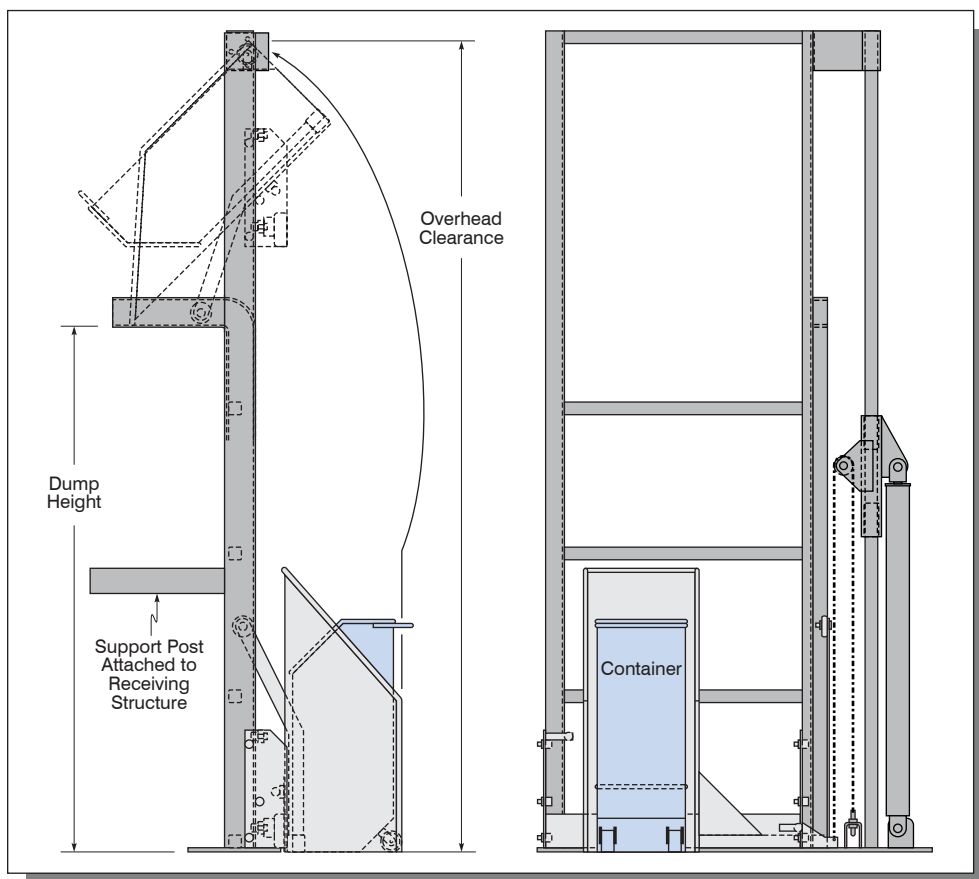
Used extensively in:

Waste handling

Recycling

Industrial processing

Food processing



← Carts can be rolled or containers can be placed directly into the cart attachment and held in place by side hold-down bars. (See the Container Attachment Page for Additional Hold-down Options.)

This illustration shows an optional funneled attachment that will direct the material from the container into a hopper that is narrower than the container and below the floor level.

135° Extended Height Heavy Capacity Dumpers

Standard Model *	EHD-1010	EHD-1020	EHD-1040
Lift Capacity (Lbs.)	1,000	2,000	4,000
Dump Height	7' to 14'	7' to 14'	7' to 14'
Cylinder(s) (Number)	1	1	1
Power Unit Range	2 HP/1.85 GPM to 5 HP/6 GPM	2 HP/1.85 GPM to 5 HP/6 GPM	2 HP/1.85 GPM to 5 HP/6 GPM
Cycle Time Range (Sec.)**	30 to 100	33 to 110	33 to 110

Notes: * The model number will change to indicate the dump height (first two numbers e.g. 09 for 9') and the lifting capacity (second two numbers e.g. 20 for 2,000 lbs.).

** Cycle Times are shown in a range due to variances in hydraulic oil flow as determined by the power unit and the length of the lifting cylinder.

Design

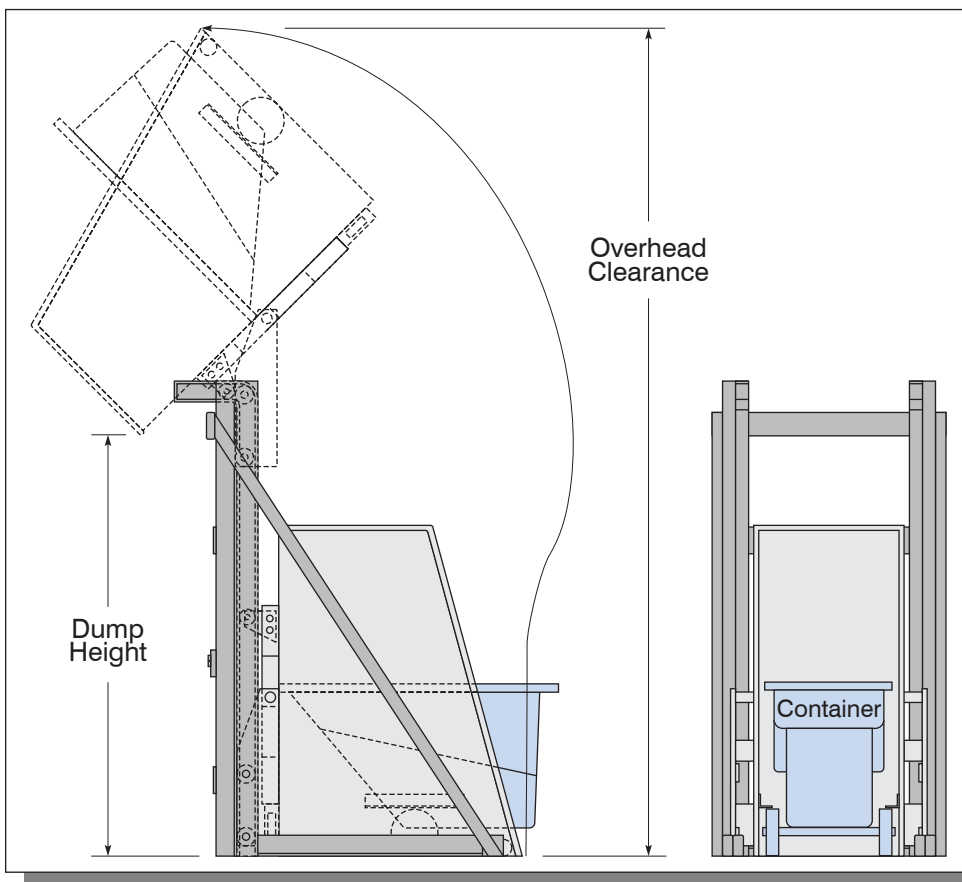
Cart Attachment: Scoop designed to fit existing or required carts. Can be equipped with a hold down bar or side hold down angles (See the Container Attachment Page for Additional Hold-down Options.)

Customized for carts, containers, boxes, baskets, totes, small barrels or drums or special containers
 Single cylinder heavy duty lifting capacity
 Structural steel frame for stability and durability - can be free-standing
 Heavy duty bearings and chain

Uses

Empty material from a container into production, recycling or waste handling equipment:
 On to a conveyor
 Into a container or trailer
 Directly into production or processing equipment

Used extensively in:
 Waste handling
 Recycling
 Industrial processing
 Food processing



➤ Larger carts can be rolled into the Heavy Capacity Extended Height Dumper scoop and held in place by side wheel capture bars. (See the Container Attachment Page for Additional Hold-down Options.)

Extended height dumpers lift then tip a container to reduce the required overhead clearance needed by conventional pivot-only dumpers.



➤ Carts are loaded then weighed in a special side-load attachment before being emptied into a trailer at this food processing plant.

Custom Applications



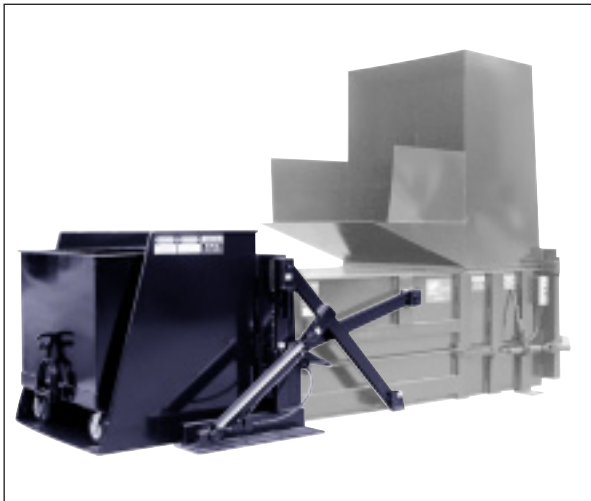
▲ This 6,000 lb. capacity 180° Container Inverter is designed to lift and empty special processing vats.



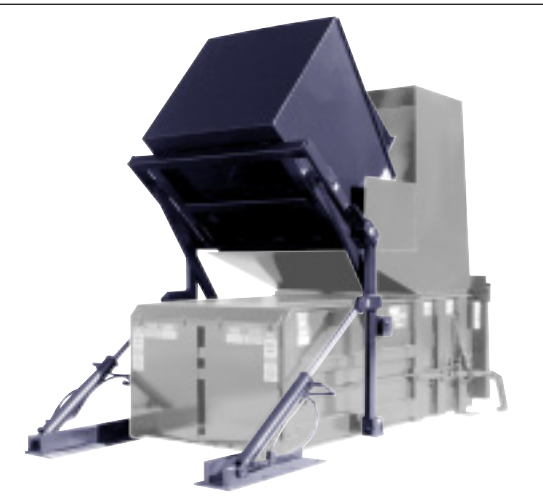
▲ A 1,000 lb. capacity Extended Height Dumper is used at a galvanizing plant to transfer small parts from a 12' deep cooling tank onto a sorting conveyor.



▲ This stainless steel Rolo-6000 is designed with a custom hydraulic container latching mechanism designed for holding special containers during the dumping process.



▲ A 2000 lb. capacity Back-feed Dumper can be attached to a stationary trash compactor to empty carts from the ground at the rear of the compactor into a hopper on the compaction chamber.



!CAUTION! This Equipment Should Be Operated By Properly Trained Personnel. Improper Use, Misuse or Lack of Maintenance could cause injury to people and/or property. Photos used in this brochure are illustrative only. Due to its commitment to quality SP Industries' specifications are subject to change without notice to accommodate improvements to its equipment. Information contained within this literature is intended to be the most accurate available at the time of printing.

Distributed By:



SP INDUSTRIES, INC.
2982 Jefferson Rd.
Hopkins, MI 49328
Web: sp-industries.com

Phone: 616-793-3232
Toll Free: 800-592-5959
Fax: 616-793-7451
E-mail: info@sp-industries.com